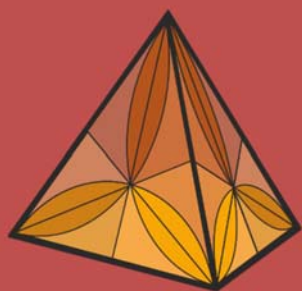


Course and Open Seminar on Compositional Data Analysis (CoDaCourse)

4-8 July
2016

Universitat
de Girona



Organized by:
Dpt. Computer Science,
Applied Mathematics
and Statistics
University of Girona
Campus Montilivi, P4
E-17071 Girona (Spain)
Coord:
41°57'46.5"N 2°49'53"E

Class size
limited!!

Special prices
for students!!

Recommended
background:
First semester courses
in statistics and basic
knowledge in
multivariate statistics.

This course is officially
accredited by the
IAMG



Supported by:

Universitat de Girona



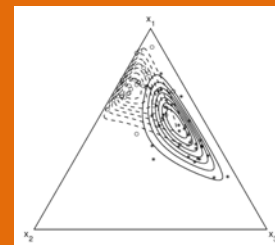
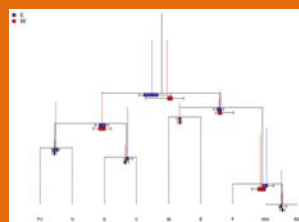
A **5-day course** on compositional data analysis will be imparted at the University of Girona (UdG) by members of the Research Group on Compositional Data Analysis.

Compositional data are vectors which components show the relative importance of some parts of a whole. Typical examples are data presented in percentages, ppm, ppb, or the like. Aitchison introduced the logratio approach to analyse compositional data back in the eighties. Since then, progress has been done in understanding the geometry peculiar to their sample space, the D-part simplex.

This CoDaCourse provides an introduction to theoretical and practical aspects of the statistical analysis of compositional data, as well as an informal discussion forum on more advanced topics. In the **theoretical sessions**, the current state of the art in this field will be presented. In the **practical sessions**, coda techniques are applied using the available software CoDaPack and some R packages. An **open discussion session** is also planned. We encourage you to **bring your own data!!!**

The following **topics** will be covered:

- Hypothesis underlying statistical analysis (sample space, scale).
- The Aitchison geometry on the simplex.
- Coordinate representation; distributions on the simplex.
- Exploratory analysis (centering, variation array, biplot, balances-dendrogram).
- Irregular data: zero values, outliers and missing data.
- Introduction to multivariate analysis: regression, manova, cluster and discriminant.



How to apply: register on the website
www.compositionaldata.com
and fill in the form at the CoDaCourses menu

Visit our web:

